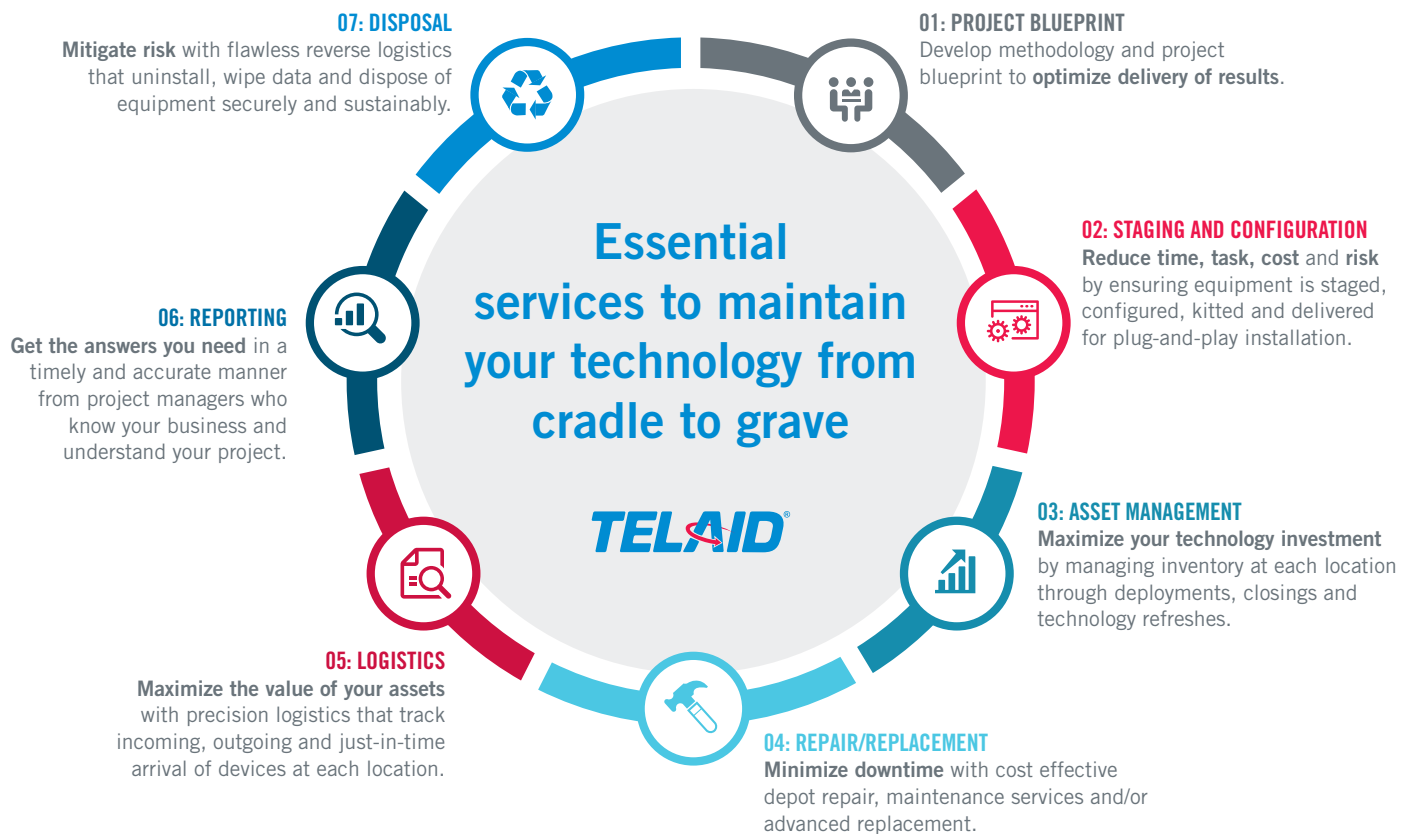


## One resource. Complete cradle-to-grave support of your technology assets.

Your technology demands attention throughout its life, from the moment it is deployed until it is retired. Failure to manage and service your technology can result in poorly performing equipment, expensive last-minute repair fees, needless purchase of new equipment, and data breaches due to improper disposal of devices. Telaid's Technology Lifecycle Solutions provide cradle-to-grave support of your technology assets that maximizes your ROI and ensures technology is always working for your business.



## Precisely the solutions you need, when you need them

Competence, flexibility and laser-like focus on delivering whenever and whatever it takes has made Telaid the go-to technology resource for virtually every mission-critical technology used by operations, asset protection, marketing and customer service. Our ability to provide true cradle-to-grave service and support gives us accountability for every aspect of technology and increases our awareness of what technology means to your business day after day, year after year.



## One resource for comprehensive technology needs

As technology ages, so do your support needs. That's why Telaid offers our comprehensive Technology Lifecycle Solutions to fulfill your needs from asset deployment to retirement and disposal. Managing multiple resources and different points of contact gets confusing and expensive. That's why Telaid offers a single point of contact that simplifies and streamlines communications.

## State-of-the-art Technology Solutions Center is Telaid's heart of logistics

The backbone of our operation and heart of our Zero Defect Model, Telaid's Technology Solution Center (TSC) is a state-of-the-art facility in Norcross, Georgia where we organize, stage, configure and repair equipment. Currently handling 200,000 technology devices each year, and capable of processing even more thanks to a facility expansion and upgrade in 2015, the TSC is essential to ensuring all of your projects are handled with complete consistency and precision.

## The TSC: The backbone of our operation and heart of our Zero Defect Model

- **Approximately 200,000** technology devices processed and shipped through the facility each year
- **Can configure 800 devices** concurrently, ensuring efficiency and speed
- **98.8% on time** delivery of projects
- **Technology agnostic**, handling dozens of brands of equipment and software

### About Telaid

Telaid has a consistent track record of delivering even the most complex technology projects on time and on budget. For more than 35 years, technology integrator, Telaid has served its clients by deploying excellence and exceeding expectations. Flexible and resourceful, Telaid is a single provider of rapid deployments, cradle-to-grave technology solutions, wireless and physical security.

**Ready to maximize the life of your technology assets and minimize the lifetime cost?**  
**Contact us at 800.205.5556 to get started!**

